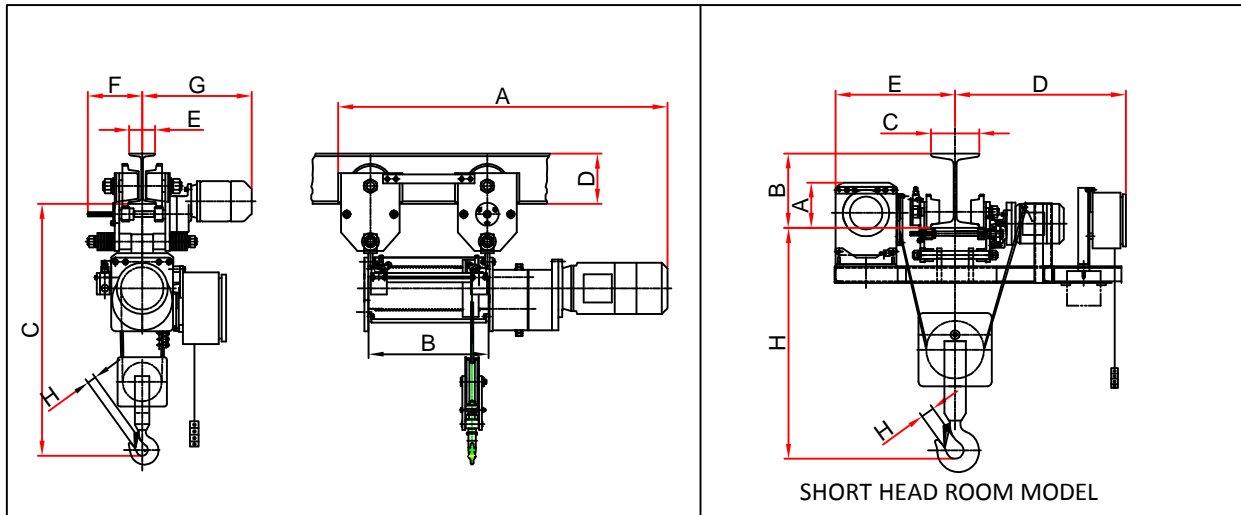
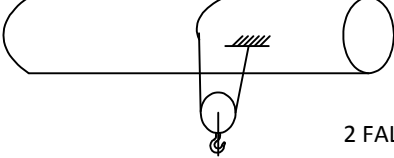
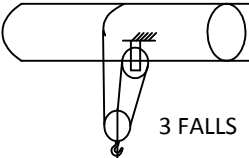


WRH NO-HL & WRH N-HL WIRE ROPE HOISTS



		WRH NO-HL		WRH N-HL				
	Capacity (SWL)	MT	1		2		3	
	Lift	Mtrs.	18	25	17.2	25	11.4	16.5
A		mm	1682	1984	1635	1960	1635	1960
B	Drum Length	mm	933	1235	897	1235	897	1235
	Approx. Weight	Kg	200	250	300	350	360	400
	No. of Falls		 2 FALLS			 3 FALLS		
	ROPE DIA.	mm	8		10		10	
	Hoist Speed	MPM	5		5		3.3	
	Trolley Speed	MPM	15		15		15	
	Hoist Motor	HP(KW)/RPM	1.5 (1.11)/1500		3 (2.2)/1500		3 (2.2)/1500	
	Trolley Motor	HP(KW)/RPM	0.25 (0.18)/1500		0.25 (0.18)/1500		0.5 (0.37)/1500	
	Trolley Wheel (Dia./Qty.)	mm/nos	113(4)		113(4)		113(4)	
C	Head Room	mm	1000		1200		1450	
D	Min. Beam Height	mm	175		175		175	
E	Beam Flange	mm	90-210		90-210		90-210	
F		mm	189		189		189	
G		mm	566		566		566	

SHORT HEAD ROOM MODEL (Optional)

Model	Capacity	A (Max.)	B (Min.)	C		D (Max.)	E (Max.)	H (Min.)
				(Min.)	(Max.)			
WRH NO-HL	1	200	300	90	210	800	500	500
WRH N-HL	2	200	300	90	210	850	500	600

Data Tolerance ±10%.

All dimensions are in mm

NOTES:

- ◆ Optional travelling speed of 8.5/4.25/2.1,2.8 m/min. can be offered.
- Check "I" Beam mounting arrangements, trolley plates will project 10mm above 'I' beam, if beam height is 150 mm.
- SHR Model is suitable for straight path only boggie can be supplier on request.